



**smart  
store™**

by orthex™

**GastroMax™**  
by orthex™

# CATALOGUE

Kitchen 2/2026



**Smarter everyday cooking**

[www.orthexgroup.com](http://www.orthexgroup.com)



# ORTHEX GROUP



## Practical is beautiful

Orthex Group is a leading Nordic producer of household products with over 100 years of experience. We are proud to offer a broad assortment of products that are high quality, safe and functional.

Our brands are strong, well-known and actively marketed. Over 90% of all products are manufactured in Sweden and Finland in our own factories.



Long-lasting and recyclable products



NORDIC DESIGN & QUALITY

Local production in Finland and Sweden



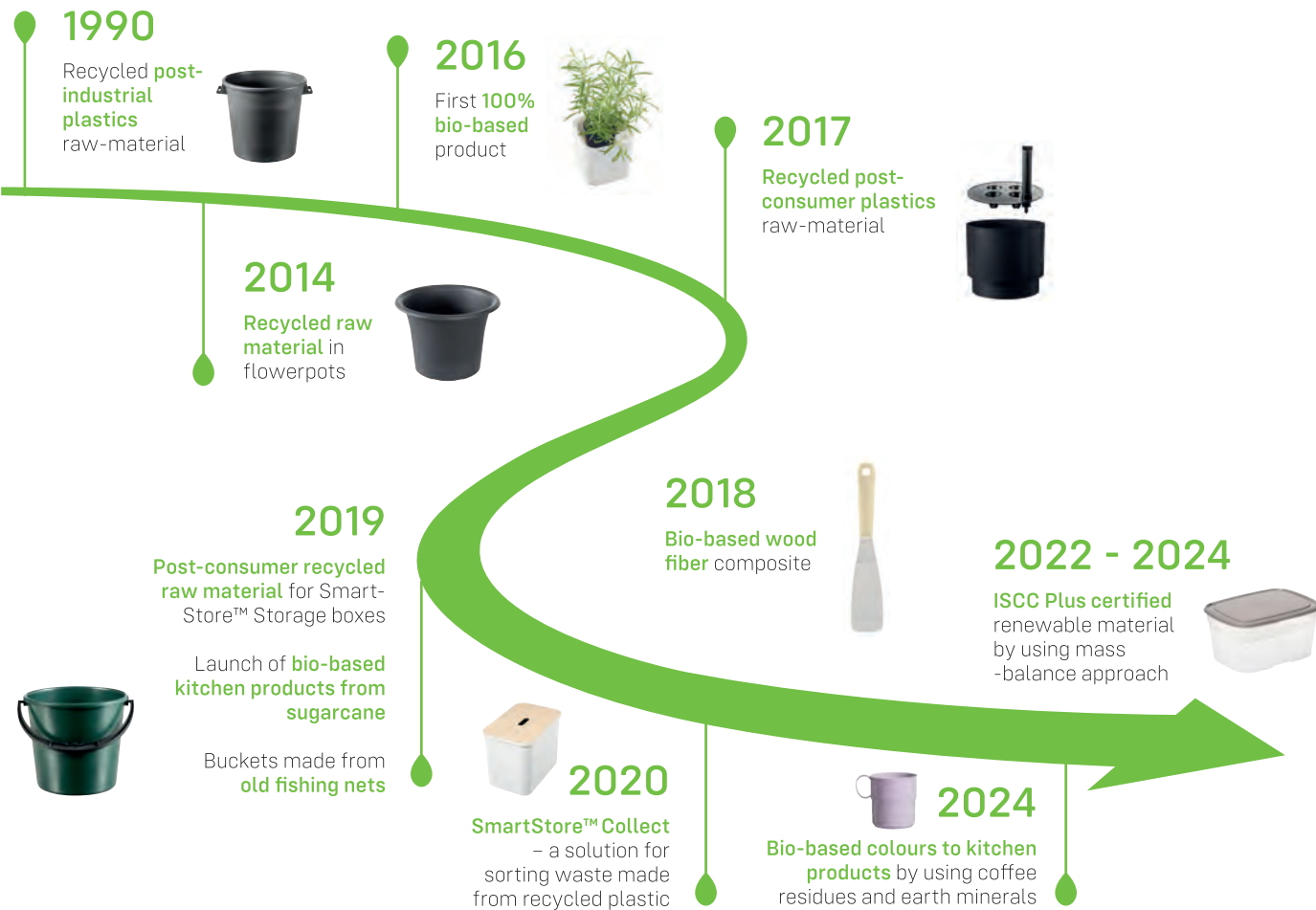
Made from recycled plastic  
Increased usage of recycled and renewable materials



- Local sales organisations
- Factories
- Warehouses

## SUSTAINABLE SOLUTIONS

The main building blocks of our approach to sustainability are our long-lasting products, sustainable raw materials, and our target towards carbon neutrality. We are actively increasing the share of recycled and renewable raw materials in our products, and we continuously strive to reduce the carbon footprint of our operations and products. Orthex's high-quality, safe, and durable products are made with care and timeless design. Orthex does not make single-use products. On the contrary, Orthex's products are made for long-term use and are fully recyclable in all our markets at the end of their life cycle.



## SHOWING THE WAY IN SUSTAINABILITY

Orthex Group's reputation for sustainability is a vital business asset that depends on the commitment of all our people to act in accordance with our ambitious sustainability strategy. Every day through our actions, each of us is responsible for making our strategy come to life through sound judgement and firm business decisions. We have made a commitment to show the way in sustainability

in our industry and we are actively supporting the UN sustainability goals.

Orthex Group is always committed to conduct business in a sustainable and responsible manner and we are happy to help our partners and consumers to do the same through working with Orthex and by selecting Orthex Group products. Orthex's sustainability report, which

details Orthex's sustainability targets, achievements and efforts, is published annually. You can find it on our web site at [www.orthexgroup.com](http://www.orthexgroup.com)

*Alexander Rosenlew*

Alexander Rosenlew  
CEO



PHOTO COPYRIGHT WWF





# CONTENTS

## FOOD STORAGE

SmartStore™ Vision.....	8
SmartStore™ Flip .....	9
SmartStore™ Sustain.....	10
SmartStore™ Easy.....	11
SmartStore™ Fresh .....	12
SmartStore™ Frost .....	13

## KITCHEN UTENSILS

Bio-based utensils.....	16
Ladles .....	18
Nylon utensils .....	20
Stainless steel utensils.....	22
Knives .....	25
Graters.....	26
Garlic press.....	27
Peelers & slicers .....	28
Other utensils.....	31
Cutlery trays & drainers.....	34

## BAKING

Baking pans.....	36
Baking utensils .....	39
Measuring cups.....	40
Mixing bowls .....	41
Cookie cutters.....	42

## TABLEWARE

Bio tableware.....	45
Classic tableware.....	46
Product symbols.....	47

## IN-STORE SOLUTIONS

In-store solutions.....	48
-------------------------	----





**GastroMax™**  
by orthex™



# SMARTER EVERYDAY COOKING

At GastroMax™ we've spent the last 100 years designing straightforward and durable kitchenware that simplifies your life. Smart solutions that don't make a fuss. They stand by your side to help you make the most of your time and efforts - everyday.

## SUSTAINABLE SOLUTIONS

Our products and services are created to be sustainable at the core and we are continuously optimizing our production processes to reduce environmental impact.

## NORDIC DESIGN

Our design language is born from our Nordic values and Scandinavian heritage – always centred around human needs with the ambition to blend form and function.

## POWERED BY PROFESSIONALS

Ever since the start over 100 years ago, we have collaborated with kitchen professionals to ensure our products are designed and tested to meet the demands of everyday life - as well as being safe to use.



**smart  
store™**  
by orthex™



# FOOD STORAGE

SmartStore™ food storage seals in the taste and keeps food fresh for longer in the pantry, fridge and freezer.



**smart  
store™**

by orthex™

## VISION

Modular SmartStore™ Vision dry food keepers bring organization to the cupboard pantry and make efficient use of available space. See-through lids allow for easy identification of content in the kitchen drawer.



## FLIP

SmartStore™ Flip features dry food storage containers with flip-top lids for easy pouring. What is stored is clearly visible from the side for cabinet storage and from the top for drawer storage.

**NEW**



**Flip 1,1 L**  
18,5x19,5x12 cm  
27010 ○



**Flip 1,7 L**  
18,5x9,5x17 cm  
27110 ○



**Flip 2,4 L**  
18,5x9,5x23 cm  
27210 ○



FOOD STORAGE





# SUSTAIN

SmartStore™ Sustain containers are made with 80 % bio-based plastic (mass balance approach). Airtight and leak-proof lids make them ideal lunch boxes.



Scan the QR code to read more:



# EASY



**Easy 1,1 L**  
18x18x7 cm  
114676 ● 114675 ●



**Easy 1,75 L**  
18x18x10 cm  
115676 ● 115675 ●



**Easy 1,2 L**  
24x16x5,5 cm  
1760686 ● 1760685 ●

# SNACK

SmartStore™ Snack is a range of food storage containers for fridge storage or lunch on the go. The containers are airtight, ensuring that food stays fresh for longer.



**Snack 0,3 L**  
12,5x9,5x4,5 cm  
7831010 ○



**Snack 0,45 L**  
12,5x9,5x6 cm  
7833010 ○



**Snack 0,6 L**  
18x12,5x4,5 cm  
7832010 ○



**Snack 1 L**  
18x12,5x7 cm  
7834010 ○



**Sustain 4 x 0.5 dl**  
5,5x5,5x10 cm  
791770 ●



**Sustain 0,3 L**  
12x12x4,5 cm  
792770 ●



**Sustain 0,45 L**  
12x12x6,5 cm  
793770 ●



**Sustain 0,6 L**  
12x12x8,5 cm  
794770 ●



**Sustain 0,5 L**  
16,5x12,5x4,5 cm  
795770 ●



**Sustain 0,8 L**  
16,5x12,5x6,5 cm  
796770 ●



**Sustain 1 L**  
16,5x12,5x8,5 cm  
797770 ●



**Sustain 1,6 L**  
25x17x6,5 cm  
799770 ●



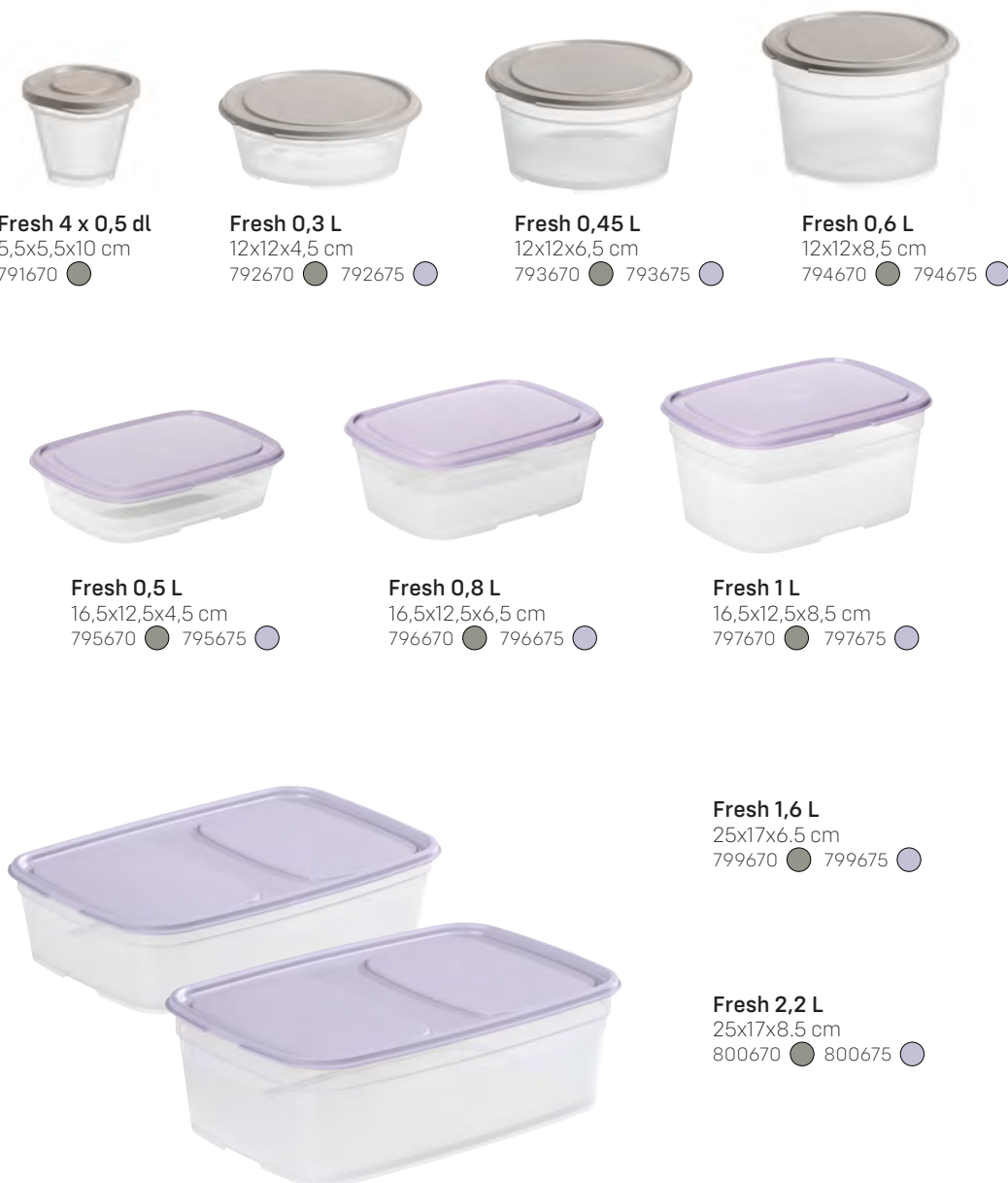
**Sustain 2,2 L**  
25x17x8,5 cm  
800770 ●





## FRESH

With leak-proof lids and container sizes to suit every need, this range is great for storing various leftovers and packing lunch to go.



**Fresh 4 x 0,5 dl**  
5,5x5,5x10 cm  
791670 ●

**Fresh 0,3 L**  
12x12x4,5 cm  
792670 ● 792675 ●

**Fresh 0,45 L**  
12x12x6,5 cm  
793670 ● 793675 ●

**Fresh 0,6 L**  
12x12x8,5 cm  
794670 ● 794675 ●



**Fresh 0,5 L**  
16,5x12,5x4,5 cm  
795670 ● 795675 ●



**Fresh 0,8 L**  
16,5x12,5x6,5 cm  
796670 ● 796675 ●



**Fresh 1 L**  
16,5x12,5x8,5 cm  
797670 ● 797675 ●



**Fresh 1,6 L**  
25x17x6,5 cm  
799670 ● 799675 ●



**Fresh 2,2 L**  
25x17x8,5 cm  
800670 ● 800675 ●

## GLASS

Multipurpose containers in glass can be used to cook, serve and store food. Made from borosilicate glass, they withstand sudden temperature changes and can go straight from freezer to oven.



**Glass 0,25 L**  
14x10,3x5 cm  
7703 ●



**Glass 1,6 L**  
22x16,5x9,5 cm  
7705 ●



**Glass 0,75 L**  
18x13,5x7 cm  
7704 ●



**Glass 2,7 L**  
28x21,5x8 cm  
7706 ●





# FROST

The modular freezer boxes nest to save storage space and stack to optimise freezer organization – even the different sizes together.



**Frost 0,3 L**  
12x12x4,5 cm  
801675 (6x0,3 L)



**Frost 0,5 L**  
12x12x6,5 cm  
802675 (5x0,5 L)



**Frost 0,75 L**  
12x12x9,5 cm  
803675 (4x0,75 L)



**Frost 1 L**  
12x12x12,5 cm  
804675 (3x1,0 L)



**Frost 1,2 L**  
24x12x6,5 cm  
805675(2x1,2 L)



GastroMax™  
by orthex™



# KITCHEN UTENSILS

Having the right tools in the kitchen makes cooking a breeze. Our kitchen utensils make preparing food easier and more enjoyable in every home. They offer quality, handiness and a design that is well thought-out.



**GastroMax™**  
by orthex™

**BIO**  
BASED

## BIO-BASED UTENSILS

The bio-based material used in these utensils is a mix of sugarcane and wood fiber from Nordic spruce. It combines the natural look and feel of wood with the functional benefits of plastic, such as being dishwasher proof.



**Potato masher BIO**  
6,5x12x28,5 cm  
7296-720



**Cheese slicer BIO**  
1,5x7,5x21,5 cm  
7248-720



**Butter spreader BIO**  
1,5x3,5x22,5 cm  
7200-720



**Peeler BIO**  
1,5x2,5x18,5 cm  
7230-720



**Turner BIO**  
1,5x5x29 cm  
7258-720



**Balloon whisk BIO**  
7x7x29 cm  
7231-720



**Ladle BIO**  
10x9x31 cm  
7213-720



**Skimmer BIO**  
9x11,3x32 cm  
7219-720



**Slotted spatula BIO**  
2x9x32 cm  
7226-720



**Pasta spoon BIO**  
8x8x29,5 cm  
7218-720



**Paddle grater BIO**  
2x11x22 cm  
7236-720



**Whisk BIO**  
25,5x8x7 cm  
7251-720



**Peeler BIO**  
2x3x19 cm  
7201-720



**Pizza cutter BIO**  
2x9x22 cm  
7269-720



**Strainer BIO**  
8x14,5x30 cm  
7214-720



\*



**Cutting board 25x15 cm BIO \***  
25x15x0,6 cm  
132720



**Cutting board 30x20,5 cm BIO \***  
30x20,5x0,6 cm  
135720



**Cutting board 35x25 cm BIO \***  
35x25x0,6 cm  
133720



**GastroMax™**  
by orthex™

**BIO**  
BASED

## BIO-BASED UTENSILS

GastroMax BIO nylon utensils are made from bio-based plastic derived from castor beans, glass fiber and polyamide. The products are durable, heat-resistant up to 210 °C and safe for non-stick cookware.



**Spiral whisk BIO**  
28x8x8 cm  
7616-15101 ●



**Cooking spoon BIO**  
29x7,5x4,5 cm  
7511-15101 ●



**Soup ladle BIO**  
27x8x9 cm  
7613-15101 ●



**Turner BIO**  
31x7x5 cm  
7614-15101 ●



**Slotted turner BIO**  
29,5x9x5 cm  
7626-15101 ●



**Cooking tongs BIO**  
28,5x5,5x1,5 cm  
7643-15101 ●



**Pasta ladle BIO**  
29x8x5,5 cm  
7618-15101 ●

KITCHEN UTENSILS

## LADLES



**Ladle S**  
22x5,5x3 cm  
13720010 ● 13720070 ●  
13720035 ● 13720075 ●

**NEW**



**Ladle M**  
27x6,5x3,5 cm  
13721010 ● 13721070 ●  
13721035 ● 13721075 ●

**NEW**



**Ladle L**  
30x7,5x4 cm  
13722010 ● 13722070 ●  
13722035 ● 13722075 ●

**NEW**





## NYLON UTENSILS

This range of basic kitchen utensils offers the key functions every home chef needs. Nylon utensils are safe to use on non-stick cookware and have a high heat-resistance.



**Spiral whisk**  
28x8x8 cm  
6916-1 ●



**Cooking spoon**  
29,5x7,5x4,5 cm  
6911-1 ●



**Pie server**  
27,5x5,5x4 cm  
6540-1 ●



**Balloon whisk**  
28x7,5x7,5 cm  
6931-1 ●

Cuts cakes and pies without damaging non-stick bakeware. Balanced to keep the blade off the table.

Whips plenty of air into cream or batter.



**Soup ladle**  
27x9x8 cm  
6913-1 ●



**Turner**  
31,5x6x5,5 cm  
6914-1 ●



**Slotted turner**  
29,5x9x5 cm  
6926-1 ●



**Cooking tongs**  
28,5x5,5x1,5 cm  
6520-1 ●

Grooved tips for a secure hold on foods as you turn or lift them.



**Pasta ladle**  
29x8x5,5 cm  
6918-1 ●



**Cheese slicer**  
20,5x7,5x2 cm  
6530-1 ●

Slices all types of cheese. The sharp edge can be used for cutting cheese.

Comfortable handles with built-in thumb rests.



## CHEF'S UTENSILS

Sturdy Chef's utensils have long handles to protect from heat and oil splashes, ideal for grilling or deep-frying. They won't scratch non-stick cookware.



**Chef's wok spoon**  
34x9,5x4 cm  
6823-7 ●



**Chef's colander spoon**  
36,5x11,5x6 cm  
6812-7 ●



**Chef's turner**  
34x9x4 cm  
6814-7 ●



## STAINLESS STEEL UTENSILS

These classic GastroMax™ utensils with steel blades are practical and longlasting products for everyday use.

Ideal for slicing hard to semi-hard cheese.  
Blade surface prevents cheese from sticking.



**Cheese slicer**  
21,5x7,5x1,5 cm  
7048-1 ●



**Soft cheese slicer**  
17,5x7,5x1,5 cm  
7049-1 ●

Best suited  
for soft to  
semi-hard  
cheese



**Turner**  
29x5x2,5 cm  
7058-1 ●



**Potato masher**  
28,5 x 12 x 6,5 cm  
7096-1 ●



**Spiral whisk**  
25,5x7x7 cm  
715-1 ●



**Apple corer**  
20x2,5x1,5 cm  
7066-1 ●



**Paring knife**  
16,5x2x1,5 cm  
7053-1 ●



**Peeler**  
18,5x2,5x1,5 cm  
7030-1 ●



**Bottle opener**  
15x4x1,5 cm  
7010-1 ●



**Can opener**  
15x3x1,5 cm  
7161-1 ●



**Pie server**  
25x5,5x3 cm  
7067-1 ●



**Butter spreader**  
21,5x3x1,5 cm  
7100-1 ●



**Pizza slicer**  
20,5x7x1,5 cm  
7069-1 ●

Easily cuts both  
thin and thick  
crust. A non-stick  
coating on the  
wheel prevents  
cheese from  
sticking. Safe to  
use on non-stick  
pans.







## KNIVES

The GastroMax™ knives have ergonomic handles with non-slip surface and top quality stainless steel blades.



**Paring knife**  
20x3x2 cm  
6709-1 ●



**Santoku knife**  
31x5x2 cm  
6708-1 ●



**Chef's knife**  
34x4x2 cm  
6707-1 ●



**Bread knife**  
34x4x2 cm  
6705-1 ●



**Carving knife**  
34x4x2 cm  
6706-1 ●



**Honing steel**  
32x3,5x2,5 cm  
7350-1 ●



**Cutting board**  
25x15 cm  
25x15x0,6 cm  
13291 ○



**Cutting board**  
30x20,5 cm  
30x20,5x0,6 cm  
13591 ○



**Cutting board**  
35x25 cm  
35x25x0,6 cm  
13391 ○



**Cutting board**  
45x28,5 cm  
45x28,5x0,8 cm  
13491 ○



An easy-to-use ceramic roll sharpener and diamond stone for dull knives and scissors.

**Knife sharpener**  
16,5x6x6 cm  
7351 ●



## GRATERS

The foldable grater opens out and locks in place for safe grating. The two sides can be used separately to grate flat over a bowl.



**Foldable grater**  
12x4x25 cm  
914400-1 ●



**Rotary grater**  
30x23x9,5 cm  
6685 ○



**Zester grater**  
33,5x3,5x2,5 cm  
6691 ●

Excellent for parmesan and other hard cheeses, 1,5 dl container.



**Mini grater with container**  
15x7x4 cm  
912200 ●

Wire-strengthened model.



**Box grater**  
21,5x12x9,5 cm  
911950 ○



**Paddle grater**  
25,5x6x1,5 cm  
7036-1 ●



Locks open for grating, folds flat for compact storage.



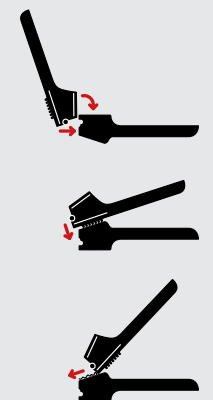
This grater is ideal for hard cheeses. Its blade grates in both directions, making it twice as efficient as a regular grater. The container neatly collects grated ingredients.



**Grater with container**  
16,5x12,5x6,5 cm  
796900 ●

## GARLIC PRESS

The innovative garlic press separates into two pieces for easy cleaning. It easily minces both peeled and unpeeled garlic cloves.



Separates into two pieces for easy cleaning

**Garlic press**  
17x4,5x4,5 cm  
6903-1 ●





## PEELERS & SLICERS

Vegetarian food is in demand. GastroMax™ peelers and slicers with their extra sharp stainless steel blades make easy work of preparing vegetables.



The razor-sharp swivel blade easily peels e.g. tomato, kiwi or asparagus.

**Peeler**  
18x2,5x2,5 cm  
7401-1 ●



A swivel blade follows the contour of vegetables and fruits.

**Peeler**  
16x2,5x1,5 cm  
6034-1 ●



**Mushroom knife**  
19,5x2x1,5 cm  
6756 ●



**Spiral cutter**  
14x7x7 cm  
6756 ○



**Y-Peeler**  
14,5x8x1,5 cm  
6901-1 ●



**Mandoline slicer**  
30x12x4,5 cm  
6695 ●



**Onion chopper**  
12,5x12,5x9,5 cm  
6201 ○



Two blades for coarse or fine texture.

**Potato/  
vegetable ricer**  
33,5x11,5x10 cm  
6601 ○



**Apple slicer**  
19,5x13,5x4,5 cm  
6755 ○



**Egg slicer/wedger**  
14,5x10x4 cm  
6088-1 ●



**Egg slicer**  
12,5x10x2,5 cm  
6087-1 ●

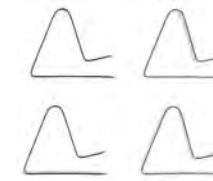




## OTHER UTENSILS



**Funnel ø 13 cm**  
13x15,5x13 cm  
15910 ○



**Table cloth clip 4 pcs**  
5x4,5x1 cm  
913860 ○



**Tea ball infuser**  
15x4,5x3,5 cm  
2339 ●



**Nutcracker**  
15,5x3,5x1,5 cm  
2334 ●



**Ceramic  
hob scraper**  
13,5x5x2 cm  
2371 ●



**Blades for ceramic  
hob scraper**  
4,5x2,5x0,1 cm  
2471 ●



**Scissors**  
23,5x8,5x1 cm  
6340-1 ●

Cuts both paper  
and fabric, soft  
grip handles.



**Scissors**  
18x6,5x1 cm  
6341-1 ●



**Roasting  
pan 5 L**  
27,5x37,5x7 cm  
6750 ○



**Testing skewer**  
14,5x2x0,5 cm  
6131-1 ●



**Ice cream scoop**  
18x4,5x3 cm  
6541-1 ●

Patterned  
surface ensures  
easy release of  
a scoop.



**Can opener**  
19x5,5x5 cm  
2337 ●



**Corkscrew  
with wings**  
17x6,5x3,5 cm  
2336 ●



**Waiter's friend**  
12x2,5x1,5 cm  
2343 ●



**Splatter screen  
ø 29 cm**  
46x29x0,5 cm  
2347 ○



**Micro cover**  
25x26x8 cm  
23191 ○





**Strainer ø 8 cm**  
18,5x8x4 cm  
56208-1 ●



**Strainer ø 19 cm**  
35x19,5x8,5 cm  
56219-1 ●



**Strainer ø 15 cm**  
31x15x6,5 cm  
56215-1 ●



**Sauce strainer**  
31x15x9,5 cm  
56315-1 ●



**Colander**  
31,5x25x14,5 cm  
56224-2 ○



**Colander**  
40x24x13 cm  
1295110 ○

Footed base for stability and keeping contents clear of countertops. Sturdy handle has a hole for hanging.

## TIMERS & THERMOMETERS



**Meat thermometer**  
12x5,5x5,5 cm  
6764 ●

Optimal temperature zones marked for various types of meat.



**Meat thermometer/timer**  
8x8x1,5 cm  
6692-1 ●

Counts down and up 59 min 59 sec. Meat thermometer can be set to max 250°C.



**Kitchen timer**  
8x8x1,5 cm  
6669-1 ●

Counts down and up 59 min 59 sec. Foldable stand and magnet on the back.



**Digital meat thermometer**  
28x2,7x0,5 cm  
6697-1 ●



# CUTLERY TRAYS AND DRAINERS

Cutlery trays and drainers are kitchen essentials. The GastroMax™ cutlery trays keep cutlery and utensils organised and quickly accessible in the kitchen drawer. We offer several models to fit a variety of drawer sizes and storage needs.



**Torka cutlery drainer**  
11x11x11,5 cm  
1216010 ☐ 1216150 ☒



**Cutlery tray small**  
33x23x5 cm  
22110 ☐ 22164 ☒



**Cutlery drainer round**  
13x13x11 cm  
22310 ☐ 22364 ☒

With compartments to easily sort cutlery whilst drying.



**Cutlery tray large**  
41x31x5 cm  
22010 ☐ 22064 ☒



Plastic drainers and trays are dishwasher proof and easy to clean.

**GastroMax™**  
by orthex™



## BAKING

Everyone loves baking or at least eating buns, pies and cakes. Practical tools make baking a pleasure. Add good ingredients and a pinch of love, and you have a recipe of success.





The tinplate baking pans are a great option for those wishing to avoid non-stick coatings.



**Tinplate bundt pan 1,5 L**  
22,5x22,5x12 cm  
6788 ●



**Tinplate springform pan 3 L**  
27,5x28x6,5 cm  
6787 ●



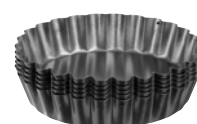
**Tinplate loaf pan 1,7 L**  
12x31x7,5 cm  
6789 ●

## BAKING PANS

The non-stick baking pans are made of carbon steel and have two layers of non-stick coating for easy cake release.



**Muffin pan 12 cup**  
34x26x3 cm  
8505, ø 7 cm ●



**Tartlet pan 4 pcs ø 10 cm**  
10x10x2,5 cm  
8520 ●



**Roasting pan 2 pcs**  
36,5x25x5,5 cm  
8540 ●



**Springform pan 2 bases 2,2 L**  
24,5x24,5x8,5 cm  
8512 ●



**Springform pan heart 2,1 L**  
22,5x21x7 cm  
8518 ●



**Springform pan ø 11,5 cm**  
12x12x4,5 cm  
8523 ●



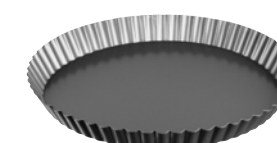
**Bun pan 1,8 L**  
22,5x22,5x11,5 cm  
8503 ●



**Loaf pan 1,3 L**  
29x12x7 cm  
8509 ●



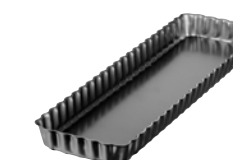
**Loaf pan 1,7 L**  
33x13x6,5 cm  
8510 ●



**Springform pie pan ø 28 cm**  
28x28x3 cm  
8519 ●



**Springform pan 2,2 L**  
24x24x7 cm  
8511 ●



**Quiche pan with removable base**  
2,7x11x36 cm  
8545 ●



## BAKING UTENSILS



**Silicone brush**  
25x4,5x1,5 cm  
6937-1 ●



**Silicone spoon spatula**  
27,5x6x1,5 cm  
6945-1 ●



**Silicone icing spatula**  
25x3x1 cm  
6944-1 ●



**Silicone spatula**  
27,5x6x1,5 cm  
6924-1 ●



**Nut and cheese grinder**  
22x8,5x6 cm  
6361 ●



**Brush**  
19x4x0,5 cm  
6521-1 ●

100%  
natural  
fibre  
bristles



**Pastry brush 2 pcs**  
15,5x3,5x0,5 cm  
2150 ●



**Measuring cup set 4 pcs**  
12x6,5x4 cm  
2373 ●



**Dough scraper**  
13,5x8,5x1,5 cm  
6075-1 ●

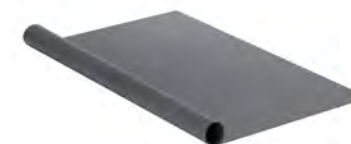
Plastic lined washable piping bag is easy to use and clean.  
Set includes 3 nozzles.



**Piping set**  
19x11x4 cm  
6603 ○



**Piping set**  
11x10x4 cm  
2344 ○



**Silicone baking mat**  
40x33x0,1 cm  
6796 ●



**Rolling pin**  
44x6,5x6,5 cm  
2383 ●





## MEASURING CUPS

This baking range offers transparency and clear volume markings for easy measuring. All the different size cups and bowls nest for compact storage.



**Measuring cup 0,3 L**  
10,5x9,5x9,5 cm  
6405-90



**Citrus press 0,3 L**  
14,5x10,5x9,5 cm  
6408-90



Can be used  
with a hand  
blender.

**Measuring cup 0,5 L**  
13,5x10,5x9,5 cm  
6406-90



**Measuring cup 1 L**  
17,5x14,5x12,5 cm  
6407-90

Long handles to easily scoop  
from tall jars. The spoons  
snap together and can easily  
be taken apart for use.



**Measuring spoon set 5 pcs**  
7x19x5 cm  
6404-90



**Mixing bowl 0,8 L**  
14x18x10,5 cm  
6420-90



**Mixing bowl 3 L**  
21,5x27x15,5 cm  
6421-90



**Mixing bowl 0,8 L**  
14x18x10,5 cm  
6420-2



**Mixing bowl 3 L**  
21,5x27x15,5 cm  
6421-2

## MIXING BOWLS



**Mixing bowl 1,5 L**  
20x16x13 cm  
7073110



**Mixing bowl 3 L**  
24x24x17 cm  
7075110



The mixing  
bowls have  
non-drip  
spouts and  
wide rims for  
easy grip.

**Mixing bowl 3 pcs**  
24x24x17 cm  
7078110



**Dough bowl 8 L**  
35x31x18 cm  
7076110



# COOKIE CUTTERS

The stainless steel cookie cutters have sharp edges that make it easy to cut out figures from cookie dough or bread.



**Cutter bobble hat**  
7,5x8x1,5 cm  
939391-1

**Cutter mitten**  
8,5x6x1,5 cm  
939392-1



**Cutter snowman**  
6x11,3x1,5 cm  
939468-1

**Cutter X-mas tree**  
11x6x1,5 cm  
939408-1

**Cutter house**  
7x7x1,5 cm  
939450-1



**Cutter flower**  
8x8x1,5 cm  
939304-1

**Cutter Christmas ball**  
7,5x8x1,5 cm  
939388-1

**Cutter Christmas ball heart**  
9x9x1,5 cm  
939389-1



All the cutters are dishwasher proof.



**Cutter star**  
8x8x1,5 cm  
939302-1



**Cutter candy**  
9x4,5x1,5 cm  
939390-1



**Cutter Christmas stocking**  
8x9x1,5 cm  
939469-1



**Cutter snowflake**  
9x9x1,5 cm  
939387-1



**Cutter angel**  
6,5x10x1,5 cm  
939424-1



**Cutter woman**  
10,5x7x1,5 cm  
939406-1



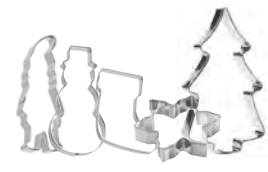
**Cutter man**  
11x7x1,5 cm  
939405-1



**Cutter Christmas gnome**  
6x11,5x1,5 cm  
939473-1



**Cutter set traditional 5 pcs**  
8 & 11 cm  
939851



**Cutter set Christmas 5 pcs**  
8, 11 cm  
939967



**Cutter heart**  
7,5x7,5x1,5 cm  
939301-1



**Cutter t-rex**  
4,5x11,5x1,5 cm  
939420-1



**Cutter dino**  
4,5x11x1,5 cm  
939421-1



**Cutter pig**  
5x10,5x1,5 cm  
939407-1



**Cutter moose**  
8x8,5x1,5 cm  
939440-1



**Cutter horse head**  
11x9,9x1,6 cm  
939478-1



**Cutter horse**  
9,5x8x1,5 cm  
939410-1



**Cutter cat**  
8,5x6x1,5 cm  
939327-1



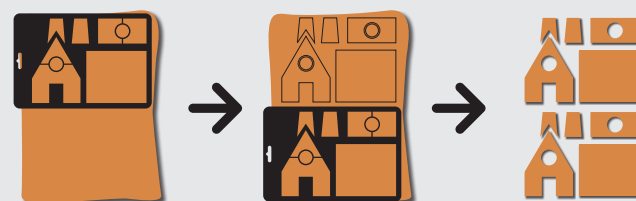
**Cutter dog**  
8x11x1,5 cm  
939427-1



**Cutter rabbit**  
10x5,5x1,5 cm  
939433-1



The 3D cookie cutters make it easy to build a gingerbread village! With just two cuts from the dough, you will get all the parts for a complete house or four Christmas trees.



**Cutter gingerbread house**  
28,5x19,5x1,5 cm  
939870



**Cutter Christmas trees**  
28,5x19,5x1,5 cm  
939952-1





# TABLEWARE

Practical and elegant plastic is lightweight, hygienic and robust and therefore an excellent material for picnics, barbeques, camping and eating outdoors.

## BIO-BASED TABLEWARE

Bio-based tableware is made with plastic from plants.



Fits in the fridge door.  
Depending on the direction  
the lid is put on, it is either  
open or closed.

**Pitcher BIO 2 L**  
22x11x24 cm  
156770 ● 156775 ●



**Coffee mug  
BIO 0,3 L**  
8x11x10 cm  
155770 ● 155775 ●



**Drinking glass  
BIO 0,4 L**  
9x9x10 cm  
154770 ● 154775 ●



**Plate BIO  
ø 23,5 cm**  
23,5x23,5x5 cm  
157770 ● 157775 ●



**Plate BIO  
ø 17,5 cm**  
17,5x17,5x3 cm  
144770 ● 144775 ●



**Mug BIO 0,3 L**  
8x10x9 cm  
163770 ● 163775 ●



**Plate, deep  
BIO ø 19,5 cm**  
19,5x19,5x5 cm  
188770 ● 188775 ●



**Plate, deep  
BIO ø 22 cm**  
22x22x3,5 cm  
167770 ● 167775 ●



**Plate  
BIO ø 25 cm**  
25x25x2 cm  
166770 ● 166775 ●



**Bowl BIO 0,4 L**  
13x13x6 cm  
164770 ● 164775 ●



**Bowl BIO 0,75 L**  
15x15x8 cm  
174770 ● 174775 ●



**Bowl BIO 3,5 L**  
25x25x11 cm  
158770 ● 158775 ●



**Bowl BIO 7 L**  
32x32x14 cm  
168770 ● 168775 ●





## CLASSIC TABLEWARE

GastroMax tableware is designed for long-term use and made from recyclable material to provide a sustainable alternative for single-use plastic.



Fits in the fridge door.  
Depending on the direction  
the lid is put on, it is either  
open or closed.

**Pitcher 2 L**  
22x11x24 cm  
15691 ○



**Bowl 3,5 L**  
25x25x11 cm  
15891 ○



**Bowl 7 L**  
32x32x14 cm  
16891 ○



**Cake cover portable**  
33x37x16 cm  
26210 ○

## OUR PRODUCT SYMBOLS

Use and care instructions are clearly communicated with symbols in the product packages.



Safe for food contact



Ovenproof



Made in Finland



Microwave proof

**+230°  
-40°**

Maximum and minimum use  
temperature



Type of plastic, important  
information for recycling



Dishwasher proof



Handwash recommended



Freezer proof

**MAX  
+230°  
<1 min**

Maximum use temperature  
with time restriction

**MAX  
+100°**

Maximum use temperature



May not be used as a trivet



Bio-based content of product certified

★	= 20-40 % biobased
★★	= 40-60 % biobased
★★★	= 60-80 % biobased
★★★★	= more than 80 % biobased



# IN-STORE SOLUTIONS

We offer inspiring material for stores to boost sales. We have planograms optimised for different size and type stores, floor and counter displays and a range of POS materials to give both information and inspiration to shoppers.



## MAXIMISE YOUR KITCHEN SALES WITH OPTIMISED SOLUTIONS

On average, the consumer only sees a fraction of the total assortment, and only visits a small part of the store area. Most of their shopping time is spent searching for items, and many leave the aisles without making a purchase.

Unlock the full potential of your kitchenware section with our optimised assortment, customised planograms, and carefully designed POS materials. These solutions ensure that your products are easily accessible and appealing, turning browsers into buyers and boosting your sales.



Boost sales and enhance the shopping experience with well organised shelves.





# DISPLAYS

Our versatile floor and counter displays are designed to boost sales even in limited spaces. With a variety of eye-catching designs, our displays are sure to inspire and engage shoppers, enhancing their in-store experience.



Maximize sales with our ready-to-sell displays



# PROMOTIONS & POS MATERIALS

Our point-of-sale materials are designed to enhance the shopping experience. The materials provide valuable information and creative inspiration, helping to drive sales and customer engagement.



Sidebanner



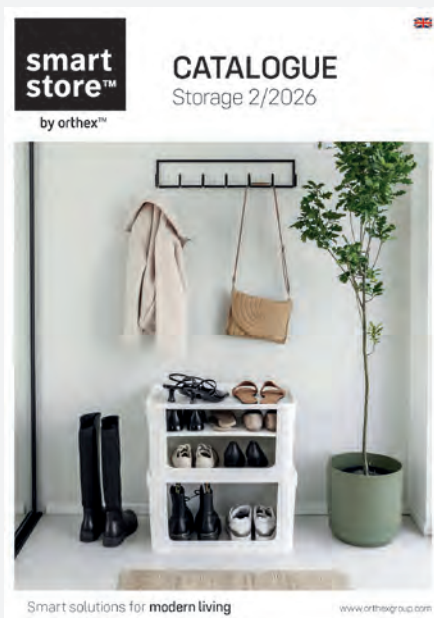
We offer top signs for different shelf sizes and with or without LED lighting.



Topsigns



# ALSO CHECK OUT OUR OTHER CATALOGUES.



## Orthex at your service

Orthex Group is the leading Nordic designer, manufacturer and marketer of household products. We have a mission to make everyday life a little easier and more enjoyable. Our well-known brands are Orthex™, SmartStore™ and GastroMax™

[www.orthexgroup.com](http://www.orthexgroup.com)



[www.facebook.com/orthexgroup](https://www.facebook.com/orthexgroup)



[@orthexgroup](https://www.instagram.com/orthexgroup)



[www.pinterest.com/orthexgroup](https://www.pinterest.com/orthexgroup)



[www.youtube.com/orthexgroup](https://www.youtube.com/orthexgroup)

## Practical is beautiful

### Oy Orthex Finland Ab

Suomalaistentie 7,  
02270 Espoo, Finland  
Tel. +358 (0)19 329 61

### Orthex Sweden AB

Box 6, SE-362 21,  
Tingsryd, Sweden  
Tel. +46 (0)477 450 00

### Orthex Norway AS

Østre Aker vei 19,  
NO-0581 Oslo, Norway  
Tel. +47 23 17 04 00

### Orthex Denmark A/S

Amager Strandvej 60-64,  
DK 2300 Copenhagen, Denmark  
Tel. +45 46 38 09 10

### Orthex Germany GmbH

Hofkamp 100, 42103  
Wuppertal, Germany  
Tel. +49 (0) 202 527 07 380

### UK & Ireland

Tel : +44 (0) 7920 236548  
[craig.sammells@orthexgroup.com](mailto:craig.sammells@orthexgroup.com)

### France

Tel. +33 (0)6 22 97 51 25  
[aurelien.chabannier@orthexgroup.com](mailto:aurelien.chabannier@orthexgroup.com)

### Benelux

Tel. +31 (0) 613691607  
[bart.zonneveld@orthexgroup.com](mailto:bart.zonneveld@orthexgroup.com)

**orthex**  
GROUP